

City of Smederevo



**INVEST IN SMEDEREVO!**

5th march 2010.

Zdravka Kovačević - Vasić  
HEAD OF DEPARTMENT FOR LED



# Geographical location





# Reasons to invest in Serbia

- Easy access to 180 mil. Consumer market
- Perfect strategic location for business
- The lowest corporate TAX in Europe - 10%
- VAT from 8% to 18%
- Special discounts for investors
- Trained and experienced workforce at reasonable costs



# Reasons to invest in Smederevo

## Location advantages

### ● EUROPEAN CORRIDORS

#### - Corridor VII

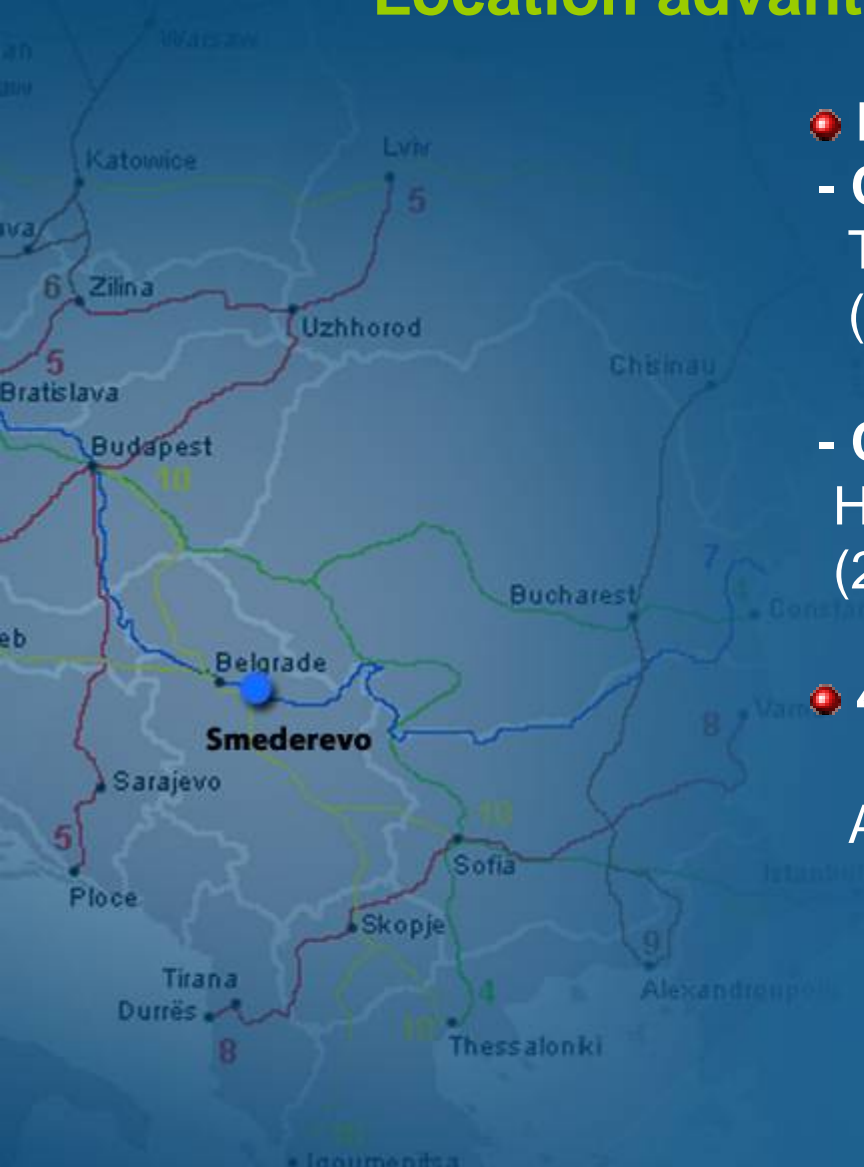
The river Danube  
(20km of coast, road bridge)

#### - Corridor X

Highway E-75  
(27km of highway, currently with three loops)

### ● 46km from Belgrade

Area 484km<sup>2</sup>, population of 110.000





# Reasons to invest in Smederevo

## Human resources

- **Century-old tradition of metallurgy and metal-working complexes**
- **8000 employees in metallurgy and metal-related branches**
- **7260 unemployed**
- **Qualified human resources**



# Reasons to invest in Smederevo

## Local government support

- Department for LED
- Strategic plan of local economic development
- 22.000.000 €- City budget
- Spatial plan of the City of Smederevo
  - General plan “Smederevo 2020.”
  - Plans of Detailed Regulation
  - PDR of New industrial zone
- Efficient City Administration and excellent cooperation with SIEPA and the Government of the Republic of Serbia



# Characteristics of Smederevo's industry

- **Basic metallurgy and metal-working complexes**
- Production of industrial and medical gases
- Transportation unit production
- Production of machines and equipment
- Building and Construction





# Success stories

- **US Steel Serbia** the biggest exporter from Serbia in 2005, 2006 and 2007 – 15% of total Serbia export
- **Messer Tehnogas** the best Foreign Corporation Brand in Serbia for business activities in 2009
- **Metech / Metes** - project of establishing the Belgian free zone in Smederevo



# City investments location New Industrial Zone





# New Industrial Zone

## Positioning in relation to the urban area

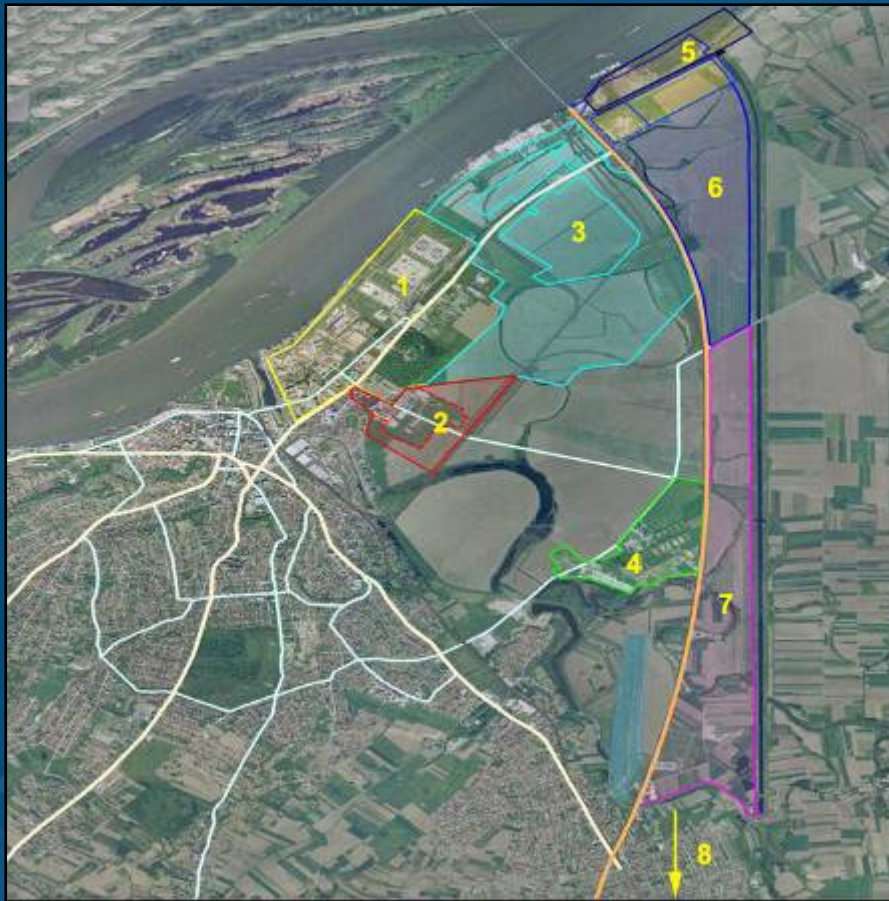
1. Urban area
2. Industrial zone Smederevo
3. USS Serbia zone





# New Industrial Zone

## Spatial distribution of entities within the zone

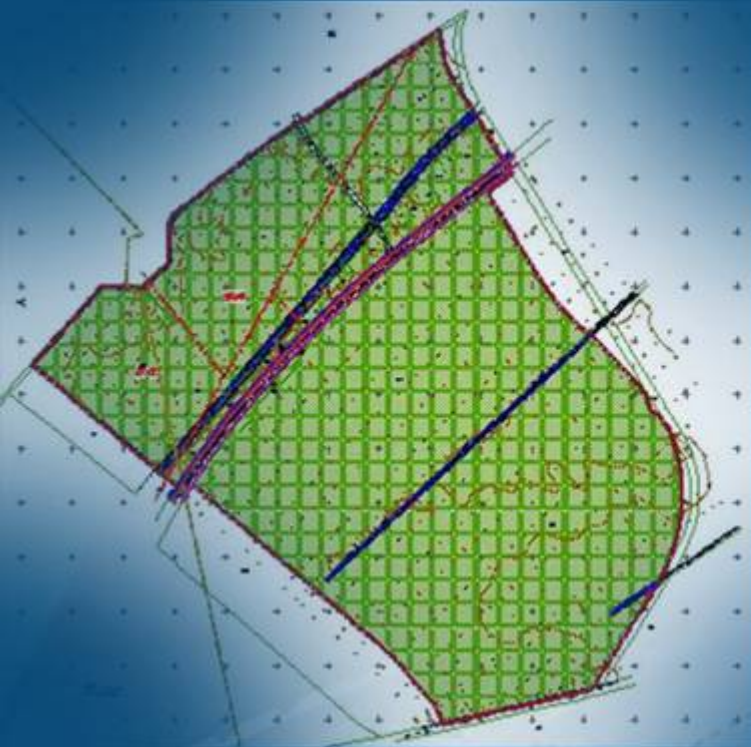


1. Old Industrial zone and the zone around the “water supply system”
2. Salinac road
3. **New industrial zone** and industrial park
4. SPIC (Specialized industrial production center)
5. New port
6. Port logistics
7. Service and storage terminals
8. Industrial zone of the USS Serbia



# New Industrial Zone

## Characteristics of Complex



- **Surface area - 84 ha**
  - Area of economic life - **63 ha**
    - 61 ha – The area of industrial and production capacity
    - 2 ha – The area of catering and service capacity
- **Capacities:**
  - For industry and production -750.000m<sup>2</sup>
  - For catering and services- 30.000m<sup>2</sup>



# New Industrial Zone Structure's conception

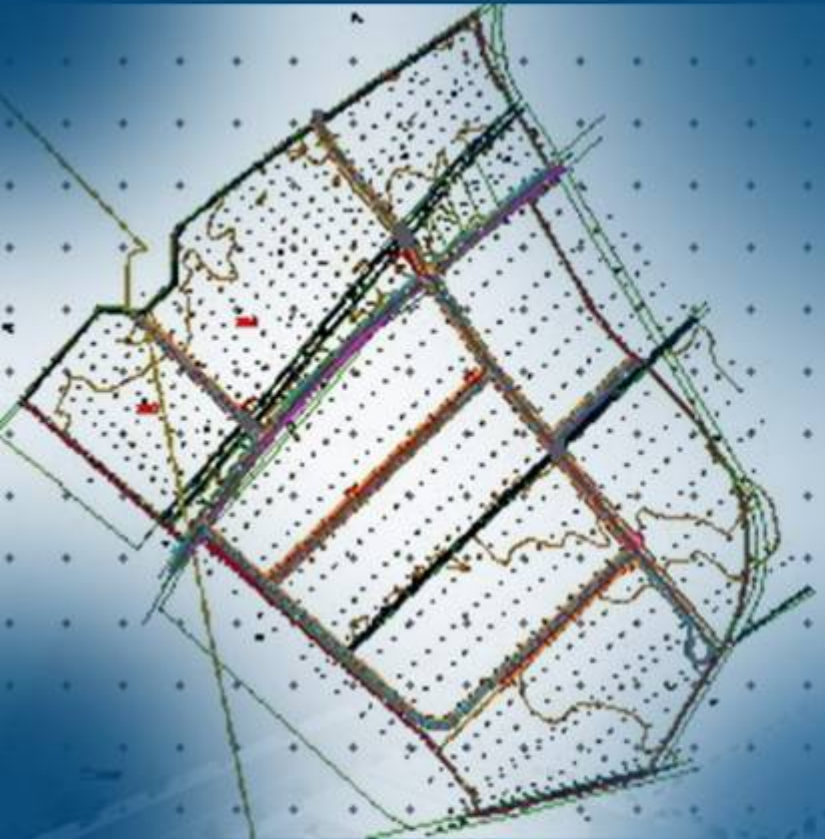


- **Modulation:**
  - Modular system of organization
  - Size of parcel **2,5 – 3 ha**
  - Possibility of multiplying
- **Planned purpose:**
  - Industry (mostly processing) – various types of product processing Electronic, metal-working, chemical industry, food industry etc.
  - \* **Advanced technological production**



# New Industrial Zone

## Infrastructural systems



- - Purification plant of the waste water system
- - Water supply system -2.315m
- - The sewage system -2.315m
- - Electric power system - DV 10kV
- - Telecommunication system -MSAN - 2.670m
- - Gas-system - MPC, 2.850m
- - Communication trench system – 3.570m



# Life quality

- The Danube and Smederevo's river island
- Smederevo's fortress
- A sports hall Smederevo
- The Culture Center Smederevo
- Sport and recreation center "Jugovo"

## Manifestations:

- "Autumn in Smederevo"
- "Fortress Theatre"





# Administrative and trade center



**SMEDEREVO / PREMIUM INVESTMENT LOCATION**



# Contacts

## City of Smederevo – Department for LED

11300 Smederevo, No.1 Omladinska street

Tel.:

+381 (0)26 222 257

+381 (0)64 844 91 91

Email:

zdravka.kovacevicvasic@smederevo.org.rs

kabinet@smederevo.org.rs

Welcome to the City of Smederevo!

[www.smederevo.org.rs](http://www.smederevo.org.rs)

SMEDEREVO / PREMIUM INVESTMENT LOCATION



City of Smederevo

Thank you for your attention.

[www.smederevo.org.rs](http://www.smederevo.org.rs)

